

# PRESENTATION OF THE PROJECT

**SIMONE MOHRS**

Policy Officer

European Hospital and Healthcare Employers' Association

HOSPEEM

# OBJECTIVES AND DELIVERABLES

## The project aims to

- 1 Identifying and addressing capacity building needs of the sectoral social partners (SSP) in the East, South and Central Europe;
- 2 Obtaining information on the involvement of the SSP in the European Semester and to strengthen their role in this regard.

## In detail

- **14** targeted countries in the three regions;
- Survey collecting the **priorities** of the employers' organisations and the trade unions as well as their **involvement in the European Semester** process and **how these priorities could be better articulated** in future activities of HOSPEEM and EPSU;
- The insights gained from the survey will be put together in **14 country-specific fact sheets**, which will be presented and discussed at **3 regional workshops** and **1 dissemination workshop**.

# IMPLEMENTATION - KEY DATES AND EVENTS

**28 March 2019**



Kick-off Meeting of the Advisory Committee and relevant stakeholders

**14 June 2019**



Regional Workshop in Bucharest, Romania

**Targeted countries**

- Bulgaria
- Hungary
- Poland
- Romania

**15 November 2019**



Regional Workshop in Rome, Italy

**Targeted countries**

- Cyprus
- Greece
- Italy
- Malta
- Portugal
- Spain

**May 2020**



Regional Workshop in Zagreb, Croatia

**Targeted countries**

- Croatia
- Czech Republic
- Slovakia
- Slovenia

**Winter 2020**

Synthesis Meeting of the Advisory Committee

Dissemination Workshop in Brussels, Belgium

# IDENTIFYING AND ADDRESSING CAPACITY BUILDING NEEDS

## Step 1: Identifying and establish contact with SSP in the targeted countries

- Contacting already existing HOSPEEM and EPSU members active in the SSDC HS within the targeted countries to receive further information and contact details and snowballing;
- Desk research.

## Step 2: Survey SSP in the targeted countries

- Send out survey to collect national social partners' priorities and their involvement in the European Semester (in national languages);
- Invite SSP to regional workshops in Bucharest (2019), Rome (2019) and Zagreb (2020) and Dissemination Workshop (2020).

## Step 3: Draft country-specific fact sheets

- Based on information received from survey and desk research

# SURVEY AND FACT SHEET STRUCTURE

## Survey structure

### Involvement in national/EU SSD

- If involved, which level/committees
- If no, the reasons for non-involvement

### Involvement in European Semester

- Are you informed; are you involved
- Not involved but trying to be
- Not involved and not interested

### Priorities and opportunities

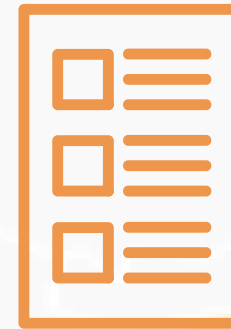
- Topics to be communicated at EU level
- Opportunities to address the priorities
- Expectations from the EU SSD

## Fact sheet structure

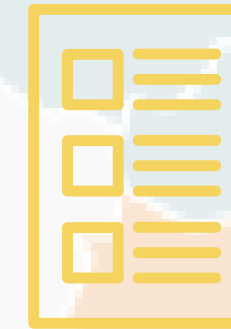
- Introduction;
- Social partners in the hospital and healthcare sector;
- Social partners' involvement in the EU social dialogue structures;
- Social partners' involvement in the European Semester;
- Social partners' priorities to be communicated to the EU level;
- Information on the project and further links to relevant documents.

# FOLLOW-UP ACTIVITIES

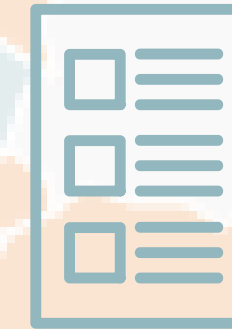
• Writing of **3** regional workshop reports 1 x



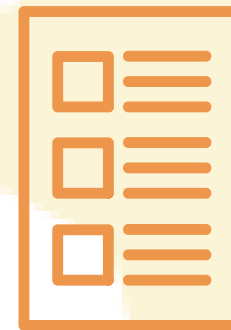
1 x



1 x

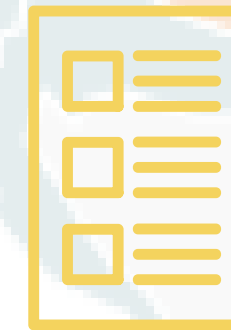


• Writing of **14** country-specific fact sheets 4 x

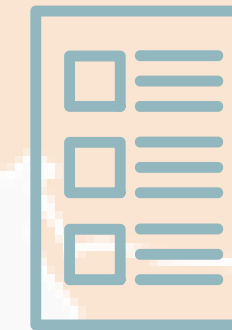


4 x

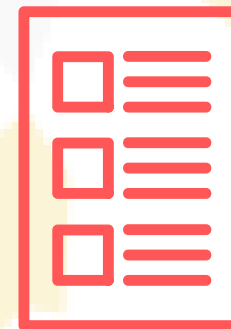
6 x



4 x



• Writing of **1** project report 1 x



1 x



# THANK YOU FOR YOUR ATTENTION

Please do not hesitate to contact the HOSPEEM or EPSU Secretariat

[s.mohrs@hospeem.eu](mailto:s.mohrs@hospeem.eu) | [mmaucher@epsu.org](mailto:mmaucher@epsu.org)  
[www.hospeem.eu](http://www.hospeem.eu) | [www.epsu.org](http://www.epsu.org)