



Introduction to the European Sectoral Social Dialogue of the Health Sector



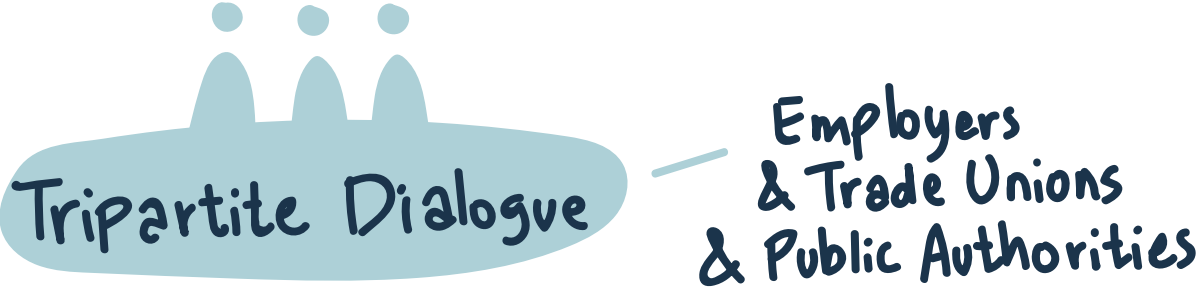
Jan Behrens
Policy Officer, European Commission

We are firm BELIEVERS of Social Dialogue

SOCIAL PARTNERS
Autonomy are KEY



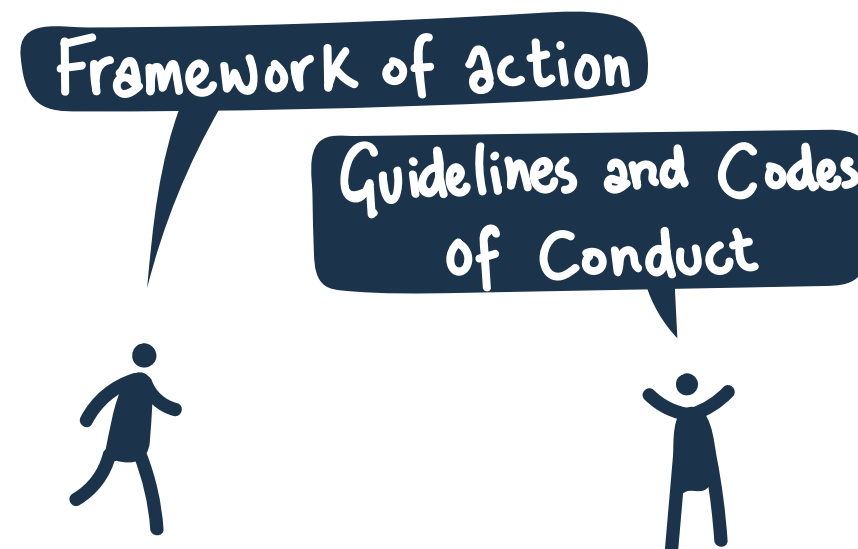
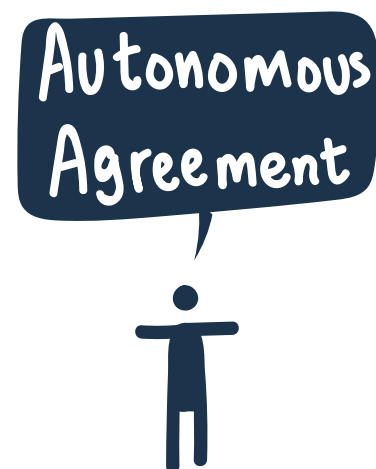
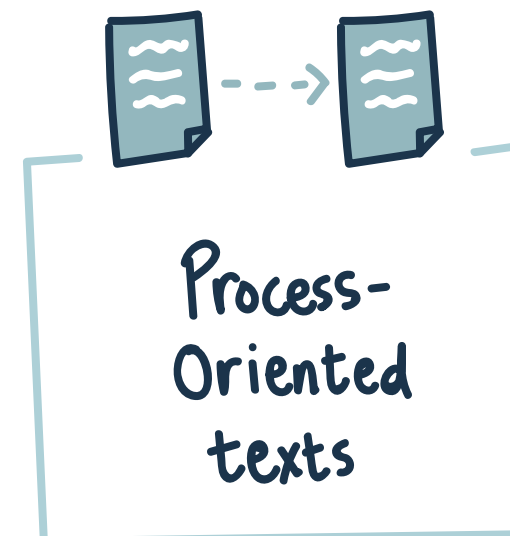
FORMATS



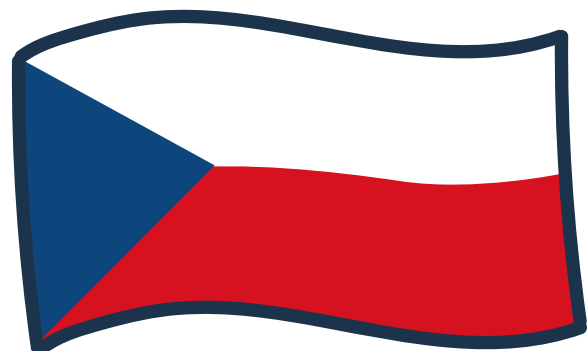
Introduction to the European Sectoral Social Dialogue of the Health Sector



Simone Mohrs
Policy Officer European Hospital and Healthcare
Employers' Association



Discussion on survey findings for Czechia and Slovakia



CZECHIA

Priorities

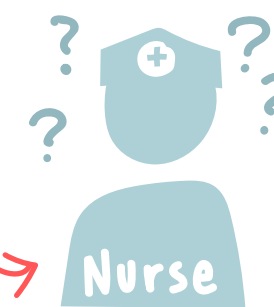
- Recruitment
- Health Safety
- Ageing Staff



SLOVAKIA

Lack of Health Care Professionals

Education



Interested in
STRUCTURAL FUNDS



Increased
HOSPITAL
investment



Rewards
to new
staff



Interested to be
more involved in
**EUROPEAN
SEMESTER**



Employers
Lack links
to hospitals

Discussion on survey findings for Croatia and Slovenia



- Priorities**
- Recruitment & retention
 - Health & Safety



Limited role — **Fragmented Trade Unions** — State is a BIG Partner

Exchange of best practise needed

Lack of Health Care Workforce

Resilience Plans

- Priorities**
- Recruitment & retention
 - Health & Safety

Staff exhaustion due to COVID-19

Average AGE is INCREASING

More SUPPORT NEEDED

LOW Cross boarder Professional Qualification RECOGNITION

We have to Prevent BURN OUT

CONTINUING Professional development?

We need to include PRIVATE sector

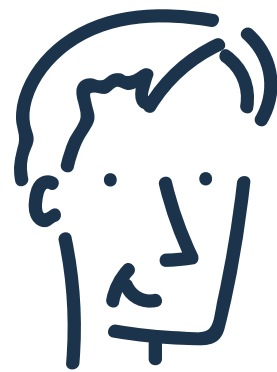
Increased COSTS

High infection RATE

Poor Working Conditions



The European Semester process: actions to develop and foster the involvement of national sectoral social partners



Egbert Holthuis
Head of Unit, among others
responsible for Slovenia and Croatia,
European Commission

Dialogue
is
essential

NATIONAL
Recovery
&
Resilience
Plans



e-Health
SOLUTIONS

Support resilience
of health systems

Panel and open discussion and exchange on challenges faced by social partners in the region

